

On The Disk...

A run-down of what's included on the free disk with this issue

Subscribers to *The Delphi Magazine* receive a free disk with each copy, packed with goodies. This includes the source code and example files for all the articles in the current issue. The code from issue 1 is also included on this issue's disk.

But, there's much more too! We've also included the full patch files for Delphi, as issued by Borland, which fix various problems in the initial release. You will find the patch files in directory PATCH.

Not content with this, we've sifted through a great many tools, components and other Delphi add-ons to bring you some of the best shareware and freeware material available, as outlined below.

➤ ALPHABAR

Component to very easily add a button bar composed of a row of buttons with single characters on – useful for moving around in databases, etc.

➤ The Chief's Installer Pro

A fully working version of this shareware installer reviewed in Issue 1.

➤ TDbSearch

From Aaron Castro, this object (not a component) allows Paradox-like searching on any field in a TDataSource, without the field needing to be indexed.

➤ LCSCMP02

Components for a Status Bar, general system information and file information for EXE, DLL and VBX files.

➤ LOCATE

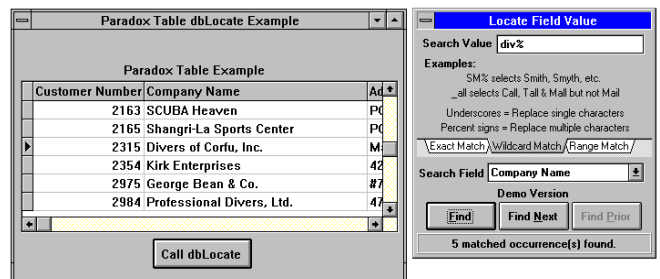
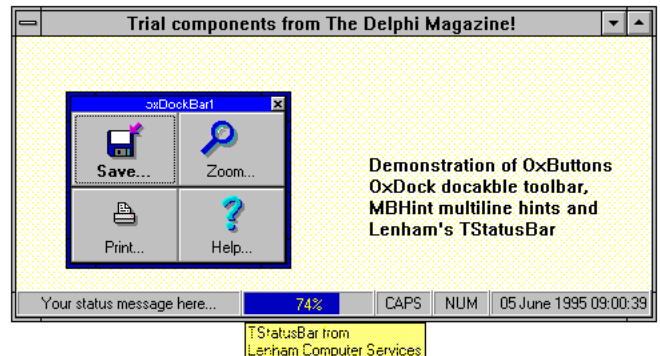
A component for doing Paradox-like Locate/Locate Next for Delphi applications. When the dbLocate search engine is called a modal dialog box pops up to allow the user to select a fieldname and search criteria (exact, wildcard or range matches are supported). The dialog stays as the topmost window until it is exited. It's a similar idea to TDbSearch (see above), but perhaps more comprehensive? Both have their uses.

➤ MBHINT10

Multi-line hint component from Martin Brutsch. Simple and easy, no more horrible long one-line hints!

➤ OPAQUE

Demonstration versions of OXButton and OXDockBar components from Opaque Software. OXButton includes the Control Wiz options-setting dialogs for use at design time, which really make it easy to choose glyphs and layout for buttons. OXDockBar is a floating and dockable toolbar.



➤ *Top: Opaque's buttons and toolbar, MBHint multiline hints and Lenham's TStatusBar.*
➤ *Above: Locate demonstration.*
➤ *Right: TAlphaPanel in action.*



➤ REPORTER

The Reporter Control component by Robert Wittig. This is a flexible and powerful approach to creating printed reports. The report is defined in Object Pascal in your program, so whilst not as visual in set-up as ReportSmith it is a *lot* faster and of course doesn't need the huge ReportSmith runtime! Includes support for printing graphic objects.

➤ RFEDIT2

Enhanced TEdit-type control which can make a field a required field and/or control valid keystrokes by means of a valid character list. It can beep when an invalid key is pressed, to provide added user feedback.

➤ RPC10C

ReportPrinter component from Jim Gunkel. Another report set-up and printing component; it's a similar concept to Reporter with some neat ideas.

➤ TPACK

Huge pack of components from Michael Ax, including: splash screens; debugging aids; a login dialog; an enhanced table with retry and packing; DOS, Windows, BDE and Novell Netware statistics; working with INI files; a restorer (to restore your application just like it was when the user exited); shells for DOS, Windows and DLLs; a toolbar; a status bar; an enhanced text grid... and more! As well as being really useful, there's lots of interesting code to browse and learn from.

➤ TOBE3

Quite simply, a component to implement query by example for Delphi database applications, from David Berneda. Just like Paradox, the results of the query are placed into an Answer Table. A demo is included.

➤ XTOOLS

A collection of shareware components from Stefan Boether. Included are: TStopWatch for elapsed time measurement; TRemember for saving and restoring position, size etc of a form for the next time your application

is loaded; TScreenSaver (obvious!); DbStatus to indicate status of a DataSource; TDbRemember which 'remembers' field widths and index settings for a datasource; TMemTable to allow creating of in-memory database tables; TDbFilter for easy database filtering.

Important Note!

Always, but **always** make a backup copy of your COMPLIB.DCL file (located in directory delphi\bin) *before* installing *any* new component into Delphi! Sometimes installation might trash your COMPLIB.DCL and you will then be left with an inoperative Delphi and (after copying the default file over from the distribution CD-ROM/floppies) will have to re-add *all* your favourite extra components. You have been warned!

Send In Your Code...

If you have some carefully crafted routines which you think may be of use to others, why not send them in by mail or (zipped up please) by CompuServe email (to 70630,717) so we can consider them for inclusion on a future free disk?